



The Grand Aurora Tour



HOLIDAY TYPE: Small Group
VISITING: Finland, Sweden, Norway

BROCHURE CODE: 2009
DURATION: 8 nights

In Brief

This really is it, the ultimate Northern Lights grand tour! Combining unique highlights of Sweden, Finland and Norway, this 8-night holiday allows you to tick off a huge array of bucket-list experiences. A night at the ICEHOTEL®, dog sledding, snowmobiling, and searching for the Northern Lights in unforgettable locations are just some of the experiences you'll have.

Our Opinion

“ I am so incredibly proud of this holiday; it has been a dream for several years to be able to pull something like this together which ticks off so many bucket list items for people wanting to see Finland, Sweden and Norway in one holiday and maximise their chances of seeing the Northern Lights. You will travel from unique hotels to wilderness destinations, try a variety of exceptional activities and stay in the cosmopolitan 'Paris of the North'. This trip covers three countries, all linked in one epic holiday, which still has the Northern Lights at its heart. ”

Amy Hope



What's included?

ALL OF THE ACTIVITIES AND SERVICES LISTED BELOW ARE INCLUDED IN THE HOLIDAY PRICE

- **Flights:** flights are included from London to Stockholm, Stockholm to Kiruna and returning from Tromsø to London (via Oslo). Regional and Non-UK flights on request. Flight routes are subject to change
- **Transfers:** airport transfers from Kiruna/to Tromsø and destination transfers are included
- **Accommodation:** 1 night in Stockholm (standard room), 1 night in a warm room and 1 night in an ice room at the ICEHOTEL®, 3 nights en-suite sauna cottage at Torassieppi Reindeer Farm, 2 nights en-suite double/twin room at Scandic Ishavshotel
- **Meals:** 7 breakfasts, 2 lunches, 3 dinners
- **The following activities and equipment are included:** 17km husky safari, 25-30km snowmobile safari, Aurora horse sled, Aurora reindeer, Arctic sauna, Northern Lights hunt by minibus in Tromsø (order of activities is subject to change)
- Experienced guides and instructors for all activities
- Cold weather clothing for the duration of your stay in Torassieppi

Trip Overview

This holiday has so many highlights spanning across three countries, it's really no overstatement to call it grand! In its simple form, it is a fabulous experience but, we also give you plenty of chances to upgrade to some incredible optional extras and holiday extensions should you wish.

Arriving in Swedish Lapland, this tour starts in the coolest way possible, literally, as you visit the original ICEHOTEL®. There will be plenty of time to explore this world-famous hotel including its chapel and icebar before spending one night in a warm room and one night in an ice room, where you will be tucked up cosy in your Arctic-grade sleeping bag for a unique night's sleep. What a way to start! You can, however, choose to start your holiday the day before, in the south of Lapland, at the exceptional Treehotel, for a night in one of the unforgettable tree-rooms there.

On your fourth day, you will travel through the wilds of Swedish Lapland and transfer to one of our most popular winter destinations in Finnish Lapland.

Here you will meet the hotel's huskies and enjoy a once-in-a-lifetime experience as you travel into the wilderness pulled by a team of eager dogs. Furthermore, you'll enjoy a thrilling snowmobile safari of approximately 25-30km.

Of course, we also include two wonderful Northern Lights activities for you here, as you are in the very heart of the Aurora Zone.

After your Finnish adventures, you head even further above the Arctic Circle to the vibrant city of Tromsø, in Norway's stunning North. This city is where many of the world's greatest adventurers set off on their expeditions and the heritage is wonderful. It is also a remarkably cosmopolitan place and there's a wealth of shops and some fabulous restaurants to enjoy.

You'll have time to explore but we have also included a dedicated Northern Lights hunt here, which leads you far from the city lights in search of an Aurora display.

Should you wish to extend your stay then we can arrange additional nights and activities in Tromsø or some of the surrounding islands. You may also like to take advantage of the fact that the Hurtigruten ferry runs from here, providing access to the whole Norwegian coast should you wish to continue your adventures.

Agenda

Please note the order of activities is subject to change

DAY
1

FLIGHTS, OVERNIGHT IN STOCKHOLM

Arriving at Stockholm Airport, you will make your own way to your hotel using the appropriate shuttle bus/taxi if you prefer. Your hotel will be located close to the Airport for ease (if you would prefer a city-centre location then please let us know).

We will aim for you to arrive early in the day so that you have time to go to your hotel, leave your luggage and then explore the city. Your hotel may have a shuttle option to the city centre, or you can take the Arlanda Express train from the airport if you prefer.

Stockholm has a lot to offer and it is a very cosmopolitan city with a wealth of shops, cafes and restaurants to explore. For some unique additions, you can admire the only preserved seventeenth-century ship in the world at the Vasa Museum or, if you fancy a singalong, head to the ABBA Museum where you can record your own performance!

Included Meals: None

DAY
2

STOCKHOLM TO KIRUNA, TRANSFERS AND THE ICEHOTEL®

Your adventure continues as you are collected from Kiruna Airport after flying there from Stockholm. You will be transferred to the small village of Jukkasjärvi, home to the world-famous ICEHOTEL®.

At the ICEHOTEL® you relax in your warm room tonight and dine in one of the restaurants (bookable and payable locally). The population of Jukkasjärvi is tiny so there is very minimal light pollution so just a short walk from the hotel you can find yourself in incredible Aurora viewing locations.

If you want to also enjoy the delights of the spectacular Treehotel in the Lulea region of Sweden, then we can arrange a wonderful pre-tour before you head to Kiruna, details can be found in the '[Personalise](#)' section of the holiday page.

Included Meals: None

DAY
3

FREE DAY AND NIGHT IN AN ICE ROOM

Today is free for you to enjoy all that is on offer at this famous hotel. You can tour the site and visit attractions such as the ice suites, ice bar and ice chapel and there is even the ice store and factory here which are quite fascinating. It is hard to believe that all of the main hotel building simply melts away in the spring when you see how much work has gone into making it!

There are also activities available for you to enjoy and the details of these can be found in the 'personalise' section of the holiday page.

Tonight, you will have the unforgettable experience of spending the night in one of the ice rooms at the hotel. Alternatively, we can arrange for you to upgrade to one of the Deluxe or Art Suites if you want to experience the ultimate in ice accommodation (subject to availability). The details of the options can be found in the accommodation section of the holiday page and our travel experts will happily provide you with a quote.

Please note: Due to availability, your first night might be in an ice room and your second night in a warm room.

A note regarding cold rooms: Between 10 am and 6 pm, the ICEHOTEL is open to the public; for day visitors and guests to enjoy the art. This means overnight guests get their rooms at 6 pm and the wake-up call is around 7:30 am when staying in a cold room.

Included Meals: Breakfast

DAY
4

CROSSING FROM SWEDEN TO FINLAND AND AURORA HORSE SLED

We highly recommend a warming sauna this morning before enjoying a hot shower and some delicious breakfast - it really sets you up for the day ahead!

It is now time to wave farewell to Sweden as you are collected for the next section of your tour. Your driver will take you through the wilds of Sweden as you cover the distance between Sweden and

Torassieppi in Finland, your base for the next three nights (approximately 3.5 hours). Upon arrival at Torassieppi, you will check into your room and pick up your cold weather clothing.

Your evening meal will be served in the hotel's restaurant, then you will be met by an expert local guide in the hotel who will take you on a horse-drawn sleigh ride in search of the Northern Lights. The guide will lead the horse further into the surrounding wilderness as you sit in an open sleigh and keep an eye on the sky for the Aurora. You will be out for approximately 1 hour.

Torassieppi's location is ideally situated for Northern Lights viewing, so be sure to keep an eye on the sky when you are not out on your evening activities too.

Included Meals: Breakfast, Dinner

DAY
5

HUSKY SAFARI AND AURORA REINDEER

Today's activities will see you encounter two of Lapland's most famous animals.

Firstly, you will visit the nearby Arctic Sled Dog Centre, home to over 400 huskies who are expertly taken care of and trained by the dedicated staff.

You can feel the dogs' excitement as soon as the mushers take the chosen dogs out of their kennels and begin to get them harnessed up to the sledge ready for your safari. You will be given full instruction and a safety briefing before hitting the trails and will travel two people per sledge, with one person standing on the back driving and the other sitting in the sleigh (there will be the chance for you to swap drivers en route).

The safari will cover around 15 - 17km and led by the guide will explore the picture-perfect Olosvuoma Forest. The trail winds its way between the snow-covered trees and all that you can hear is the sound of the dogs' paws on snow.

During your free time today you can also arrange additional activities locally and there are also snowshoes and cross-country skis available to rent on site should you wish to explore independently.

After dinner, you will be back in a sleigh for another Aurora hunt but this time, you will be pulled by reindeer for a true Lappish experience. Accompanied by a local reindeer herder, you will travel into the forest and search the skies for a Northern Lights display. The sleigh ride will last approximately 45 minutes.

Included Meals: Breakfast, Lunch, Dinner

DAY
6

SNOWMOBILE SAFARI AND ARCTIC SAUNA

Following breakfast, you will have a free morning to relax or enjoy additional activities (bookable

locally) and then you can enjoy a delicious lunch in the hotel restaurant before your thrilling snowmobile safari. After a full safety briefing and instructions, you will follow your guide into the wilderness, covering approximately 25-30 km. Following your adventure, you will head back to Torassieppi through snow-clad forests. Two people will share a snowmobile during this activity, which will last for around two hours overall. Please note, you must be at least 18 years old and hold a full driving licence to drive a snowmobile.

This afternoon you will transfer to Jeris to use the lakeside sauna facilities on site. There is a traditional smoke sauna here and, if you're feeling brave, you can also take a dip in the ice pool (you must be in excellent health to try this)

Your evening meal will be served in the hotel restaurant and following this, you will have a free evening. Why not head outside and await the magical Aurora, hoping that it will make an appearance tonight? Alternatively, additional Northern Lights activities may be available to book locally.

Included Meals: Breakfast, Lunch, Dinner

DAY
7

FINLAND TO NORWAY'S NORTH AND THE CITY OF TROMSØ

After a leisurely breakfast, you will check out of your hotel room ready for the next stage in your journey.

Today you will be driven from Finnish Lapland to the city of Tromsø in Northern Norway! The journey time is around five hours in total. You will enjoy some stunning scenery as you travel north and the landscape around you will be constantly changing. You will stop en-route, where you can get some lunch (payable locally), before heading over the mountains into Norway and down to the coast.

Upon arrival in Tromsø you can check in to central hotel and relax. We would then suggest heading out to enjoy the restaurants in Tromsø, it may be a bit of a shock compared to the wilderness of the last few days, but this city deserves its reputation.

Your time in this city has been left so it can be tailored to suit you and so there is plenty of time for independent exploration as well as additional activities in this remarkable place.

Tonight you may like to add in an additional Northern Lights hunt so please see the personalise section for details.

Included Meals: Breakfast

DAY
8

FREE DAY AND NORTHERN LIGHTS HUNT

Following breakfast, you will have a free day to spend as you please. We have a large selection of optional activities which can be added in to your holiday so you can tailor your time here. They can all be found in the 'Personalise' section of the holiday page.

There are many incredible sights and attractions to visit here such as the Polar Museum, Polaria, the mountain top cable car and many more. The shops and cafes are also very much worth exploring.

Tonight you will leave the city lights behind and travel via minibus in the company of an expert local guide to search for the Northern Lights. Using the latest weather and solar forecasts, your route will be carefully selected to help provide the best possible chance to witness the Northern Lights. Snacks and hot drinks will be served around a campfire. You will be out for approximately 5-7 hours.

Included Meals: Breakfast

DAY
9

DEPARTURE

A taxi transfer to the airport will be arranged to meet your return flight home.

If you would like to extend your stay either using the world famous Hurtigruten coastal ferry service or by flying on to a range of other destinations please speak to our Travel Experts for a personalised quotation.

We can also arrange for you to extend your time in Tromsø in order to take in more of its rich Arctic heritage.

Included Meals: Breakfast

Personalise this tour

Our pick



Snowmobile Experience (ICEHOTEL®)

Snowmobiling is a thrilling way to explore the frozen landscape and this shorter tour is perfect for those who want a taster experience of this activity.

After full safety instructions, you will follow your guide across the frozen Torne River and into the snowy woodlands. You will also stop along the way to take photos of the stunning scenery.

You will travel two per snowmobile with the opportunity to swap drivers. Please note, you must be at least 18 years old and hold a full driving licence to drive a snowmobile. You can drive your own snowmobile

for a supplement.

Duration: 2 hours

Available: Daily 4pm-6pm December 1 – April 13

Other options

ACTIVITIES



Wildlife and nature photography (ICEHOTEL®)

Photography enthusiasts or those who simply want to see more of the stunning landscape and wildlife will love this nature photography tour into the surrounding wilderness.

You can bring your own camera or borrow one that comes equipped with a 300mm tele lens. The tour will start with a minivan transfer and your first stop will be all about familiarising yourself with the camera and your surroundings.

Once you're comfortable with getting a great shot, the tour will move on to find the most photogenic locations and hopefully, some Arctic animals will make an appearance too.

Please note that a SD memory card is not included in the price.

Duration: 4 hours

Available: Year-round (except the 24th and 31st December)



Moose safari on horseback (ICEHOTEL®)

What better way to look for wildlife in the snowy forest than during a peaceful horseback ride?

After a short transfer to the Ofelaš Icelandic horse farm, you will meet the animals and prepare your horse. Then you will follow your guide into the moose's grazing land, with spectacular views of Sweden's highest mountain range Kebnekaise. You will be on the lookout for moose, reindeers, birds, hare and foxes who all live in the wonderful wilderness here.

After the ride, you will be served a traditional three-course lunch.

Duration: 6 hours (including transfers and lunch)

Available: Daily 9am – 3pm Dec 10 – Mar 31



Cross-country skiing (ICEHOTEL®)

Cross-country skiing is incredibly popular in this region and you'll soon see why when you strap on a pair of skis and follow your guide to explore more the snowy surroundings.

After full instructions, you will ski upstream of the Torne River to reach the island of Rimisaari where you will enjoy drinks and snacks over an open fire. You don't need any previous experience of skiing as the guide will teach you the best techniques. Along the way, keep your eyes peeled for wild animals.

For those who love the experience, you can keep your skis for the rest of the day for some independent exploration.

Duration: 3 hours

Available: Daily 9am – 12pm Dec 1 – Apr 13



Wilderness Dinner (ICEHOTEL®)

Enjoy an authentic three-course wilderness dinner inspired by the season. You will head out in a minibus to a secluded camp with a guide who will tell you all about the characteristics of Sweden's eight seasons and the inspiration behind your meal tonight. You will also keep an eye on the sky as you enjoy your food, as the Northern Lights could make an appearance to really make your wilderness experience extra special.

Duration: 4 hours including transfers

Available: 7pm – 11pm Dec 1 – Apr 13



Make your own ice sculpture (ICEHOTEL®)

You've seen the impressive ice sculptures at the ICEHOTEL®, now is your chance to have a go at creating a masterpiece.

Using crystal-clear ice that has come directly from the Torne River, your guide will teach you how to use your carving tools and then you can let your creativity take over.

Duration: 2.5 hours

Available: 9am – 11:30am Nov 1 – Apr 13



Driving Your Own Dog Sled – The Ultimate Adventure (ICEHOTEL®)

Dog sledding is a true Arctic highlight. Nothing compares to the feeling of getting back to nature as you and your dogs travel through the snowy wilderness.

You will first transfer over the frozen Torne River on a snowmobile-pulled sled to the husky centre where you will meet the dogs. After a full safety briefing and instructions, you will step into the role of musher as you and your loyal team of sled dogs set off on the trails for a mini-expedition. Your dogs may be making a lot of noise to begin with but they will soon quieten down as they settle into their pace.

Halfway through the tour, you will stop at a cosy wilderness cabin for a traditional lunch.

Duration: 4 hours (incl. transfers and lunch)

Available: Daily 11:15am – 3:15pm Dec 1 – Apr 15



Sled Dog Ride in Winter Wonderland (ICEHOTEL®)

Experience dog sledding from the comfort of the passenger seat where all you have to worry about is looking around at the beautiful surroundings as they pass.

Dog sledding is a much-loved pastime and this tour gives you the chance to enjoy it from the cosy sled as the dogs ride in front and the musher steers behind you.

Along the way, you will stop to enjoy drinks and snacks around an open fire. The sled takes up to 4 people.

Duration: 1.5 hours

Available: Daily 9:30am – 11am and 1pm – 2.30pm Nov 16 – Apr 13



Arctic Wildlife Safari (ICEHOTEL®)

Learn about the wildlife native to the area as you travel on snowmobiles through the stunning scenery.

After a full safety briefing, you will follow your guide into the wilderness to track moose, reindeer and grouse.

The length of the tour will be determined by the season and weather conditions and after the ride, you will be served a three-course lunch made using local ingredients.

You will travel two per snowmobile with the opportunity to swap drivers. Please note, you must be at least 18 years old and hold a full driving licence to drive a snowmobile. You can drive your own snowmobile for a single supplement charge.

Duration: 6 hours (approximately) including transfer time

Available: Daily 9am – 3pm (Dec 8 – Apr 7)



Northern Lights Safari on Snowmobile (ICEHOTEL®)

For an adventurous way to search for the Northern Lights, you can snowmobile out in the wilderness to a prime lookout location.

After a full safety briefing, you will travel away from light pollution, following your guide through the dark winter landscape. Your guide will make short stops to tell you more about the Northern Lights as you watch the skies in hope for their appearance. You will then reach a warm wilderness cabin to enjoy a two-course dinner.

You will travel two per snowmobile with the opportunity to swap drivers. Please note, you must be at least 18 years old and hold a full driving licence to drive a snowmobile. You can drive your own snowmobile for a single supplement charge.

Duration: 4 hours

Available: Daily 7-11pm (Dec 15 – Mar 25) and 8pm – midnight (Mar 26 – Apr 13)



Snowmobile Adventure (ICEHOTEL®)

See more of Sweden's superb winter landscape when you drive a snowmobile further into the wilderness.

After a full safety briefing, you will follow the guide across the frozen Torne River, over snowy hills and along icy lakes. You will reach amazing viewpoints where you could see animal tracks and some of the Arctic wildlife before stopping for a traditional Swedish Fika to warm by an open fire.

You will travel two per snowmobile with the opportunity to swap drivers. Please note, you must be at least 18 years old and hold a full driving licence to drive a snowmobile. You can drive your own snowmobile for a single supplement charge.

Duration: 3 hours

Available: Daily 1pm-4pm December 1 – April 13



Aurora Husky Visit (Tromsø)

Have an extra special Aurora evening as you visit a husky camp and learn all about these working dogs, all while keeping an eye on the sky for the Northern Lights to make an appearance.

The camp is approximately 30 minutes away and upon arrival, you will receive a tour of the facilities and get to meet some of the famous residents. As you pet and play with the dogs, you will be on the lookout for the Northern Lights which could appear at any time.

You will warm by an open fire and enjoy a traditional dinner.

Duration: Approximately 4.5 hours in total

The meeting point for this activity is only a short walk from your hotel.

Available until the 22nd March



RIB Wildlife Safari (Tromsø)

Cruise over the beautiful waters on a wildlife spotting tour where you could see reindeers, elk, white-tailed and golden eagles, king eider and little auks.

Your tours starts with a short (approximately 20 minutes) transfer to Kvaløyvågen where you will be given your warm clothes and safety instructions before stepping on board the RIB boat. As well as the wildlife, you will see more of the stunning surroundings.

Duration: Approximately 5 hours



Historical City Walk (Tromsø)

Uncover the fascinating history of Tromsø during this guided walking tour. You will visit the oldest parts of the city as well as the famous Polar museum with brilliant information on the northern part of Norway. The tour will finish in an authentic pub for more history and fun facts.

Duration: Approximately 2.5 hours

Available: Wednesdays and Saturdays

The meeting point is only a short walk from your hotel.

Photography by Konrad Konieczny/Nordnordge



Reindeer sledding and Sámi Culture (Tromsø)

After a short transfer (approximately 45 minutes) this activity will help you gain an insight into the fascinating culture of the region.

First, you will meet with a local reindeer herder and their animals. You will hear stories of life in the Arctic as you enjoy a traditional Sámi meal. You will then try your hand at lasso throwing before enjoying a short safari ride (approximately 30 minutes).

Duration: Approximately 5 hours in total (including transfers and lunch)

The meeting point for this activity is only a short walk from your hotel.

Photography by Konrad Konieczny/Nordnorge

Included Accommodation



Stockholm Hotel (Nights: 1)

Spend the night in Stockholm, Sweden's fascinating and unique capital.

Our Travel Experts will present you with a variety of hotel accommodation options, suited to your preferences. Typically, for ease when heading for your onward flight, they will recommend hotels which are close to the airport, however, if you would prefer to stay in the city centre, please let us know at the time of enquiry. Your room will be based on a twin or double.

The ICEHOTEL® (Nights: 2-3)



THE ORIGINAL

The [ICEHOTEL®](#) at Jukkasjärvi has the impressive claim of being the world's first ice hotel and was developed from a concept beginning in 1989. A local entrepreneur by the name of Yngve Bergqvist who ran a thriving tourism business in the summer decided to attract tourists in the winter by offering ice carving workshops and creating a small ice igloo as a gallery to showcase these designs.

This igloo grew in scale each year until one night a group of guests, equipped with reindeer skins and sleeping bags asked to spend the night, creating the concept of the ice hotel in the process!

Although [ice and snow hotels](#) can be found across Lapland, the ICEHOTEL® remains the original.

What's more, 2018 saw the ICEHOTEL® become the first-ever Nordic Swan Ecolabel hotel made completely of ice and snow.

The certification process looks at all areas, from energy and water consumption to waste management; understandably, this presented many challenges when measuring a hotel whose rooms melt away at the end of each winter season!

The eco-label adds to a growing list of certifications for the ICEHOTEL® who is also certified a Sustainable Arctic Destination. Certification ensures guests are choosing environmentally conscious products and the ICEHOTEL® are – rightly so - very proud to receive such recognition.

ICEHOTEL 365

The hotel now boasts ICEHOTEL 365, a permanent structure, allowing it to be a year-round destination to visitors who travel the world to sleep in a room of ice and snow. Containing deluxe rooms, art suites, an ice bar and a sculpture hall, this environmentally sustainable building is a construct of glass, metal and concrete, but with the same incredible standard and visual design of snow and ice on the inside, with cooling tubes to keep it at a temperature of around -5 at all times.

Alongside this is the classic ICEHOTEL® building, constructed purely of ice and snow and carefully crafted each December, utilising blocks from the nearby Torne River.

Home to ice rooms, winter suites and a chapel the structure is a marvel to see and, come summer, simply melts back into the river from which it came. Each year, architects, designers and artists submit designs for the hotel's features and a handful are chosen to go forward with their theme.

The hotel consists of several buildings including the main ice building and ICEHOTEL 365. We cannot guarantee which area our guests will stay in.

The rooms which are contained within the ice and snow building will not be available until after the 14th of December. Check-in time for the cold rooms is usually around 6 pm and for the warm rooms, it is approximately 3 pm. The ICEHOTEL® is open to members of the public for viewing between 10 am and 6 pm. You will check out after breakfast.

Hotel facilities

- The reception is in the main warm building which also houses the lounge area, warm bar, dressing room, luggage room, restaurant and gift shop which sells a selection of ICEHOTEL® themed gifts and locally sourced handicrafts
- Guests who are on a guided tour of the ICEHOTEL® will also visit the large warehouse where you can learn about how the hotel is constructed each season
- The restaurant serves breakfast lunch and dinner which include some wonderful Swedish favourites. The restaurant operates fixed dinner seating times and we highly recommend that you make a reservation in advance with us
- As an alternative, guests can eat at the Homestead Restaurant which is a smaller, rustic restaurant a short walk from the hotel
- The classic ICEHOTEL® building is connected to a warm building which houses the toilets, showers and sauna. There are also lockers in here in which to store your valuables and clothes overnight
- The warm building also has a small number of bunk beds in case you decide your ice room is not for you

Guest room types

The Cold Rooms: the inside of the cold rooms is kept at around -5°C but you will be equipped with arctic grade thermal sleeping bags so you will stay surprisingly warm!

Please take note that the cold rooms are accommodated in two separate buildings. ICEHOTEL 365 is a permanent building constructed of metal, glass and concrete with an ice and snow interior kept cool via cooling tubes. Some rooms are also in the classic ice building which is made wholly of ice and snow and constructed afresh each winter season. We cannot guarantee which area you will stay in.

Ice Rooms (in classic ice building) (only available after 14 December): the ice rooms are the simplest designed rooms which are usually booked as standard. These are made of ice and snow and each contains a mattress topped with reindeer skins and also some ice furniture and carvings. They are closed off from the corridors via thick curtains as opposed to doors, but the thick walls of ice and snow allow for great sound insulation. There are usually around 15 rooms available for guests.

Art Suites (in classic ice building) (only available after 14 December): these are uniquely and beautifully designed by chosen artists around the world each year and offer a wide variety of themes and include intricate sculptures and carvings to reflect this. As with the ice rooms, these have curtains instead of doors and there are around 15 in total for guests to book.

Deluxe Suites (in permanent ICEHOTEL 365 building): the unique and enchanting Deluxe Suites 365 are individually themed and hand-carved by artists commissioned throughout the world, with the designs changing each year. To spend a night amidst the lifelike and exquisite carvings is a surreal and magical experience. You are awoken by sparkling colours which reflect from the ice and cup of hot lingonberry juice at your bedside table. A sauna session then awaits you before you enjoy a delicious breakfast. The Deluxe Suites are part of the new concept ICEHOTEL 365, available all year round thanks to a new specially designed building which is run on solar power. There are three different types of Deluxe suite available.

Deluxe Suite Hilla: the Hilla Suites are beautifully decorated suites available throughout the year. They contain a bathroom, two comfortable armchairs, a shower and a sauna, which is directly connected to the bedroom. A comfortable bed decorated with reindeer hides and inclusive of a thermal sleeping bag lies at the centre. The design is a mixture of local culture and history created by Marjolein Vonk and Pia Sandgren. A heated relaxation area is available which provides storage for your belongings and the suite has doors which lock for your privacy.

Deluxe Suite Jáuvre: these majestic suites are furnished with comfortable Carpe Diem beds covered in reindeer hides and inclusive of a thermal sleeping bag. Inside the room, there is a bathroom, two comfortable armchairs, a shower, sauna and a bathtub. Similarly, to the other suites, the Jáuvre suites are designed with a combination of local culture and history by Marjolein Vonk and Pia Sandgren and they have a heated relaxation area from where you can store all your belongings and the suite has doors which lock for your privacy.

Deluxe Suite Johka: this spacious suite contains a comfortable double bed, a connecting bathroom, two comfortable armchairs and double waterfall showers, which are directly connected to the room. The design features a combination of local culture and history and was created by Marjolein Vonk and Pia Sandgren. A heated relaxation area provides storage for your belongings and the suite has doors which lock for your privacy.

Art Suites 365 (in permanent ICEHOTEL 365 building): these offer the same amenities as the art suites in the classic ice building but being part of the permanent building allows them to have a proper door. Each is independently and artistically designed by chosen artists and architects to reflect new carefully chosen themes each year. There are 12 art 365 suites in total.

The Warm Rooms: for those less keen on sleeping in low temperatures, the ICEHOTEL® also has a number of warm accommodation options:

Kaamos Hotel Room (standard): light and airy, these en-suite rooms have modern décor and furnishings. Each has a double bed or twin beds and TV.

Kaamos Hotel Room (superior): these rooms have the same amenities as the standard Kaamos rooms, however, they have recently been updated and decorated in a contemporary style.

Nordic Hotel Chalet: these are designed to accommodate up to four people. Each has one double/twin bedroom and one room with bunk beds, making them ideal for families or small groups of friends. Each has an ensuite bathroom with shower, small living room with a fridge and kettle and TV.

Arctic Chalet: these have a double and a single room so are best suited to three people. Each chalet is en-suite and has a shower room, a small living area, fridge, kettle, TV and telephone.

Image credits: ICEHOTEL, Jose Carlos, Cabello Millan, Javier Alvaro, Colomino Matassa & Asaf Kliger, Tjasa Gusfors, David Andren, AnnaSofia Maag, Anna Katrin Kraus, Hans Aesch, Rob Harding, Timsam Harding, Luc Voisin, Mathieu Brison, Petros Dermatas, Ellie Souti, Nicolas Triboulot, Cedric Alizard, Sebastian Scheller, Kristina Mockel, Jose Carlos, Cabello Millan, Javier Alvaro, Colomino Matassa, Peter Grant & Magnus Skoglöf & Martin Jakobsson & Imagebank.sweden.se

Torassieppi Reindeer Farm - Sauna Winter Cottage (Nights: 4-6)



Located on the edge of Lake Torasjarvi, and bordering the Pallas Ylläs National Park, Torassieppi Reindeer Farm is situated in one of the most picturesque wilderness areas in Finland.

The farm building dates back to 1847 making it one of the oldest in the area. Today it has been lovingly renovated and accommodation has been added nearby so that guests can stay in this spectacular spot.

Facilities:

- Torassieppi has a central restaurant and reception building which is a short walk from the winter cottages. A roaring fire accompanies the evening meals which include as much local produce as possible. Typically they are served in a buffet format and include traditional Finnish ingredients such as reindeer (of course dietary requirements are also catered for).
- There is no bar but alcohol can be purchased from the restaurant so it can be enjoyed with your evening meal.
- The reception building also has a small gift shop area which sells a variety of local crafts, including reindeer hides and traditional carved Kuksa cups.
- There are two lakeside saunas at Torassieppi which are both heated in the evenings for guests to use. Separate facilities are provided for both men and women.
- There is free Wi-Fi in the main restaurant building.
- Tea and coffee are available free of charge throughout the day in the hotel restaurant / bar area.
- A perfect spot to search for the Aurora, there are also a few wooden benches on the edge of the frozen lake, which are ideal for enjoying the expansive wilderness and hopefully a Northern Lights display or two.

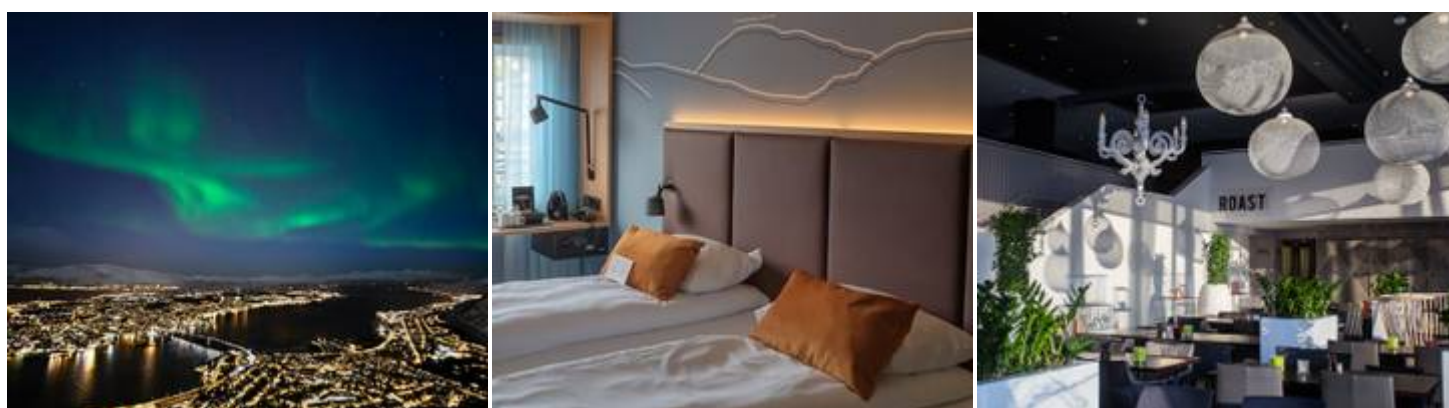
Room types:

Sauna Winter Cottage

The cottages are ideal for those who want more space or for larger groups of people. Located close to the main restaurant, they are only a short walk away through the snow-laden trees and close to the frozen lake beyond.

The cottages offer a sauna, fireplace, a living room area, toilet, shower, hairdryer and kitchenette with a kettle. They have two bedrooms which have twin beds and a sleeping alcove with bunk beds. Whilst they can sleep up to 6 people, we feel that they are most suited to 4 or 5 adults.

Scandic Ishavshotel (Nights: 7-8)



Situated right by the quayside, you'll only have to walk approximately 50 metres from the Hurtigruten ferry to reach this hotel with fantastic views. The Ishavshotel has a lovely modern design with free Wi-Fi, a restaurant and bar area.

Hotel Facilities

- The location is this hotel's real selling point - just a 4-minute walk from the famous Polar Museum and close to other attractions in the city.
- The hotel's restaurant uses delicious local ingredients and the breakfast buffet is award-winning.
- There is free WiFi available throughout the hotel.
- The Scandic shop on site is open 24 hours.

GUEST ROOMS

TWIN/DOUBLE ROOMS: the hotel offers 214 hotel rooms each equipped with a TV, fridge and tea and coffee making facilities. Some of the hotel rooms have a lovely view of the harbour and many guests enjoy watching the Hurtigruten ships sail into port whilst en route north or south.

Awaiting images

The Specifics

Holiday group size (approximate)

Minimum numbers required for this holiday to run vary from 2 to 8 people (depending on departure date). Maximum 30 people (approximately). Please speak to our Travel Experts for further information.

Group Size

We always try to provide an approximation of the group size you can expect to be with for the duration of each of our holidays. It may be that you are joined by others for parts of your holiday (such as transfers and particular activities) but the above number reflects those you can normally expect to be with from beginning to end. If group size is something which is particularly important to you, please speak to our Travel Experts and they can suggest the best holidays for you.

Tailor-made holiday group sizes will vary for all activities as will the group size for any additional activities you book.

Minimum numbers required for a holiday to operate

Some of our holidays require a minimum number of participants to operate (as listed in the 'Group Size' section). If your holiday departure has not yet reached the minimum number, you will be told at the time of booking. In the unlikely event that your chosen date is not guaranteed by nine weeks before your scheduled departure date, we will contact you to discuss the available options as per our [booking conditions](#).

Minimum and maximum age

If a specific minimum age applies to this holiday, it can be found in the Key Facts box on the holiday Overview page.

Unless otherwise stated in the Key Facts box on the holiday Overview page, the minimum age for participation in an Aurora Zone holiday is typically 12 years old (there may be younger children in some destinations who have booked with other companies). If an adult-only environment is important to you, then please contact our Travel Experts and they will advise on the best dates and destinations for you. If you are looking for a holiday designed specifically for families then please see our sister company www.activitiesabroad.com.

Itinerary amendments

The order of activities listed in this agenda is provided for guidance only, your final and detailed itinerary will be provided either with your final travel documents (which are uploaded into your online account around a week prior to departure) or upon arrival.

Terms and Conditions

Our full booking terms and conditions can be found on our website: <https://www.theaurorazone.com/booking-conditions>