



Abisko - Tailor Made



HOLIDAY TYPE: Tailor Made
VISITING: Sweden

BROCHURE CODE: 27010
DURATION: 3 or more nights

In Brief

Tailor your winter break to Abisko to create your holiday, your way. Choose a mixture of Arctic adventures including dog-sledding and snowmobiling with incredible Northern Lights activities. You can include a brilliant combination for your trip of a lifetime.

Our Opinion

“ I love Abisko not only for its beautiful mountainous landscape and really amazing Aurora potential but also for all the exciting activities you can get stuck into here. By day, you can snowmobile into the wilderness or mush a team of dogs across the snow, whilst at night, you can keep a watch for the sky to hopefully light up. The freedom of a tailor made option means that you can really make the trip your own. ”

Dawn Kitson



What's included?

ALL OF THE SERVICES LISTED BELOW ARE INCLUDED IN THE HOLIDAY PRICE

- **Transfers:** return airport transfers
- **Accommodation:** a minimum of 3 nights hotel accommodation in en-suite standard twin rooms at Abisko Mountain Lodge
- **Meals:** 3 breakfasts and 3 dinners
- **Activities:** choose from our extensive range of activities (**individually priced as detailed in the activity timetable**)
- Cold weather clothing for the duration
- Services of our expert local guides

A note on flights: whilst flights are not included in the holiday price, our team will happily provide a quote and arrange them for you. Simply ask one of our Travel Experts for details of the available options from your preferred departure airport.

Trip Overview

When it comes to a location for a Northern Lights adventure Abisko is ideal.

Firstly you are in a prime location for a potential Aurora display – Abisko's location at the centre of a range of mountains ensures cloud cover is frequently dispersed and clear skies are common. Secondly, there is a wide and varying range of exciting activities on offer with something to suit everyone, from thrill-seekers to those looking for a bit of gentle exploration. Lastly, the guide and hosts here at the lodge are exceptional and are sure to make you feel at home.

The beauty of our tailor-made option is that you can set the pace of your trip. The base price includes your transfers, accommodation and meals, leaving the rest of the experience down to you. We would advise spending a minimum of three nights here to make the most of your time and our Travel Experts are on hand to help you craft the ideal itinerary.

At Abisko there are some of the 'must-do' activities on offer, including thrilling husky safaris and

snowmobile safaris taking in the forest and mountain terrain. There is also the option to add on activities that are different to those we offer elsewhere – from ice climbing a frozen waterfall to a day tour of the town of Narvik.

Of course, the Aurora activities are also very special and you can choose from a range which includes snowshoeing, sleigh rides, photography evenings and a trip to the Abisko Sky Station.

Guests taking part in this holiday also have the chance to spend the night at the world famous ICEHOTEL® in addition to their time at Abisko, as well as the opportunity to spend the night in a tree room at the famous Treehotel prior to your stay. See the '[activities](#)' section of this web page for full details or speak to one of our Travel Experts for a quote.

For those who want to build their own Swedish adventure then this holiday is the ideal place to start.

Image credits: Lights Over Lapland - Chad Blakley, Lola Akinmade Åkerström.imagebank.sweden.se, Klas Tigerstrm, Henrik Trygg.imagebank.sweden.se

Agenda

Please note the order of activities is subject to change

DAY
1

ARRIVAL, TRANSFER AND WELCOME

Included Meals: Dinner

DAYS
2 TO 3

DESIGN YOUR OWN HOLIDAY

Included Meals: Breakfast, Dinner

DAY
4

DEPART OR EXTEND YOUR STAY

Included Meals: Breakfast

Personalise this tour

Our pick



Aurora sleigh ride

Travelling in a sleigh which is pulled behind your guide's snowmobile you will set off into the snow-topped surroundings of Abisko in search of the Northern Lights.

Your guide will be heading towards a spot in the mountains where the light pollution is minimal and the potential of seeing the dancing colours of the Aurora is high. Warm drinks will be served as you wait patiently in hope of witnessing a display.

around 3 hours.

This activity operates on request at 8:30 pm and lasts

Image credit: Lola Akinmade Åkerström & imagebank.sweden

Other options

ACTIVITIES



Day trip to the ICEHOTEL®

The ICEHOTEL® is a magnificent monument to snow and ice architecture and it is one of the highlights of any visit to Swedish Lapland.

Luckily, it's easy to visit this wonderful sight from Abisko and this experience is designed to showcase the ICEHOTEL® at its best.

Your trip starts with a transfer through the mountains and forests to the town of Jukkasjarvi on the banks of the Torne River - home of the ICEHOTEL®. Upon arrival, you will be given your entry tickets and will join a specialist guide for a tour. This was the world's first hotel made of ice and whilst there may now be many reproductions around the world, few can compare to the intricacy of the original here in Sweden. During the tour, you can marvel at the Art Suites and rooms along with the Ice Chapel. All the while you will be provided with details regarding how this one-of-a-kind building is constructed from scratch each and every year.

The visit ends with a visit to the ICEBAR® where you can enjoy a drink in an ice glass (payable locally) for a very cool experience!

Prior to heading back to Abisko, you will have some time to enjoy lunch or a coffee and pick up some souvenirs (all payable locally).

This excursion is available on Tuesdays, Thursdays, Fridays and Sundays at 9:45 am and you will return to Abisko at around 2:30 pm.

Image credits: Martin Jakobsson & imagebank.sweden.se



Abisko Canyon and National Park

This shorter walk takes you around the Abisko River Canyon, one of the most scenic areas in the locality. The canyon sits at the heart of the Abisko National Park and as your local guide leads the way they will highlight some of the area's most delightful natural sights.

This is an excellent introductory activity which departs at 2 pm and lasts around 1.5 hours.



Snowshoeing at Abisko

This daytime hike in the wilderness around Abisko is an excellent way to get close to the natural world and witness the landscapes which surround the lodge. With your guide leading the way you will witness some of the most scenic spots in the valley as you explore on your very useful snowshoes. Travelling on foot means that you may also get the chance to witness some of the local wildlife during your journey such as moose or ptarmigan.

This activity operates on request, departing at 9.30 am and 2 pm and lasting around 3 hours.

Image credit: Lindsay Correa (client)



Abisko Aurora hunting

Using a minibus to hunt the Northern Lights is ideal, as the mobility provided by the vehicle means that you can look to outrun any localised cloud cover.

Your expert guide will use the weather and solar activity forecasts to determine the best possible route for your hunt and you may, therefore, set off in any direction. The key here is the expert knowledge of your guide and they will do all that they can to locate the best possible Aurora viewing opportunities for you.

This activity lasts around 3 hours and is available on request, starting at 8.30 pm.

Image credits: Chad Blakely



Northern Lights photography evening

This is a wonderful option to not only enjoy Aurora hunting but hopefully capture their beauty on film.

Your knowledgeable guide will give you an SLR camera for the evening. The camera will already be set to capture the Northern Lights should they appear and your guide will be on hand to help you take the best photo.

All you need to take along is an SD memory card in order to store all of the pictures and bring them home. If conditions are conducive to a display of the Northern Lights then this is sure to be an unforgettable souvenir to take home with you.

Lights then this is sure to be an unforgettable souvenir to take home with you.

This activity operates on request, starting at 7:40 pm and lasting approximately 3-4 hours, including transfers.

Image credit: Chad Blakely, Lights over Lapland



Evening visit to the Aurora Sky Station

The Aurora Sky Station is a famed Northern Lights viewing platform located 900 metres above sea level on Mount Nuolja in Abisko.

To get there you will travel via chairlift up the mountain which, on a clear night, offers wonderful views over the surrounding mountainous landscape and hopefully the Northern Lights.

When booking this excursion you should be aware that the chairlift is not covered (you will be supplied with warm overalls) and if the weather is unfavourable then the lift will not operate. Should this be the case you will remain at ground level in the Aurora Lounge at the nearby mountain station and enjoy a Northern Lights presentation, no refunds will be offered by the sky station in this event.

Given the popularity of this excursion, we would advise you to book in advance. Please note that once booked, however, your date cannot be changed or cancelled should the weather conditions and Aurora forecast be poor.

This activity includes transfers and operates daily. You will depart at 8.40 pm, returning to the lodge on one of the set transfer times of your choosing, which departs at 10:45 pm, 12:15 am and 1 am. Should you wish to include dinner during your visit to the Aurora Sky Station this can also be arranged (supplements will apply and you will depart for the Sky Station at approximately 5:40 pm) -

please ask our Travel Experts.

@Lola Akinmade Akerstrom & Visit Sweden



Day trip to Narvik via minibus

Narvik is a coastal town in the neighbouring county of Norway with a rich history and scenic viewpoints. This minibus tour will drive you here via a scenic route which will take in the spectacular mountain scenery as well as the waterfalls and valleys which can be seen en route.

Having driven alongside the majestic Lake Tornetrask you head over the delightful Bjornfell where grass-roofed cottages are dotted around the mountainside. The forests and fells then fall steeply down to the fjord below where a beach-side stop will offer wonderful photo options on a

clear day.

In Narvik, you will visit the newly opened Peace Museum. This fascinating place offers an insight into what living in the Fjords was like during the Nazi occupation. You will also have lunch at the Quality Hotel.

You'll also have plenty of time to enjoy the sights, shops and sounds of the city before heading back over the mountains and into Sweden.

This activity departs on Thursdays and Saturdays at 9.30 am returning to Abisko around 3.30 pm.



Ice climbing in the Abisko Canyon

The Abisko Mountain Lodge sits close to the frozen waterfalls of the Abisko Canyon and therefore provides an excellent location for you to try this thrilling and challenging activity. Your expert guides will show you how to utilise your crampons and ice axes to ascend the ice face. No prior experience is necessary as all safety equipment and tuition is provided.

Approximate activity duration is 3 hours including transfers.

The activity operates on request and starts at 9:30 am and 2 pm.

Please note that you do need a good level of physical fitness to participate in this activity.



Sámi culture and reindeer experience

This experience is a delight for anyone who wishes to understand more about Sámi culture and the importance of reindeer herding to their way of life.

You will be driven to the Sámi village of Ravttas around 45 minutes to the east of Abisko. On arrival, you will enjoy a cultural experience and have the chance to get close to the iconic reindeer of Lapland. You will be given the chance to feed the reindeer and will begin to see the bond between these animals and their herders. You will be shown how the animals are all identified and how the

herders make out their characteristics in amongst the herd.

There will also be the chance for you to enjoy a short ride on a traditional reindeer-pulled sled which is a real treat.

A simple and warming lunch will be served in a traditional Sámi lavvu (tepee) and your hosts will provide an insight into their unique culture.

The experience is available on Mondays, Wednesdays and Saturdays. You will leave Abisko around 9.15 am and return around 3.00 pm.

Image credit: Lindsay Correa (client)



Ice fishing on Lake Torneträsk

Ice fishing is a much loved Scandinavian pastime in this region and has developed from a food-gathering necessity into a very enjoyable sport.

On this excursion, you will be led to one of the many nearby lakes which can be topped with frozen ice up to a metre thick. Your guide will assist you in drilling through the ice with a traditional hand drill and then all you need do is drop down a line and wait.

Patience is the key here, but a highlight of the activity is being out in the open wilderness and enjoying the serene beauty of your surroundings as you wait for a fish to bite.

This activity lasts around 2 hours and operates on request, starting at 9.30 am.



Abisko husky safari

A chance to travel by husky sled is a much sought after experience and is an unforgettable Arctic activity.

This trip allows you to experience the excitement of the trail as you travel in a sled which is driven by an expert musher. This means that you can enjoy the sights and sounds as your guide takes control of the dogs and sled.

The huskies have a love of the trail and their enthusiasm is infectious. As they settle into a fast pace, peace descends, giving you space and time to fully absorb your

surroundings

This activity includes transfers to meet with the dogs and in total lasts between 2 and 3 hours, depending on the trail conditions. It is available on request, departing at 9:30 am and 1:30 pm.



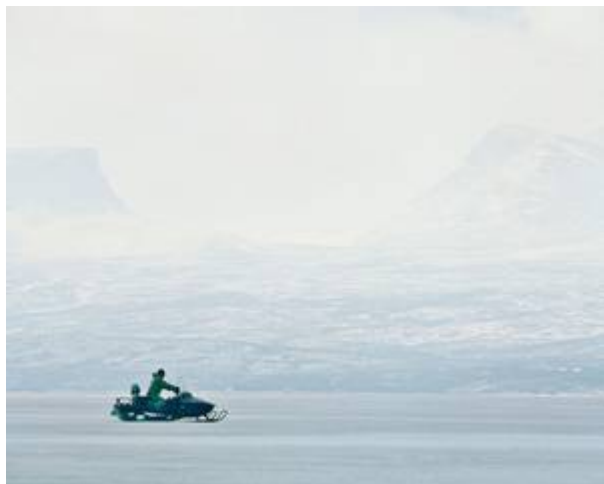
Aurora snowshoe hike

This nocturnal excursion will see you strapping on snowshoes and setting off into the darkness for a walk of around 45 minutes (each way) to a nearby vantage point where you keep a watch on the sky for a potential Northern Lights display. Your guide will light a warming fire and discuss the Northern Lights and how best to see them.

The guides are all hugely enthusiastic about the local area and will happily answer any questions you may have about Swedish Lapland and the Northern Lights as you

wait in hope for the sky to come alive.

This activity operates on request, departing at 8:30 pm and lasting for around two and a half hours.



Abisko snowmobile safari

One of the many highlights of Abisko is that it is surrounded by spectacular and untouched wilderness and one of the best ways to explore is to set off by snowmobile. These thrilling machines let you cover a great deal of ground more quickly.

Before departure, you will be given full instructions and a safety briefing on how to handle the snowmobiles before setting of two people per snowmobile across frozen lakes and along wide mountain trails.

You will need a full driving licence to drive a snowmobile and should be over 18. You can swap between driver and passenger during the trip.

This activity operates on request at 9:30 am and 1:30 pm and lasts around 2 hours.

If you would prefer to travel one person per snowmobile then supplements will apply. Please contact our team for details.



Abisko half day snowmobile safari

For those who want a longer safari on snowmobiles and the chance to explore a little further then this four hour trip is the activity for you. Snowmobiling is a real thrill and after full tuition and a safety briefing, you will take the trails with your guide leading the way.

During the safari, you will explore the forest and mountain landscape which surrounds Abisko and will gain a real sense of the scale of the wilderness here. You will travel two people per snowmobile and will have the chance to swap drivers if you wish to do so.

It is possible for us to arrange for you to have your own snowmobile for an additional supplement, please contact one of our team for a quotation.

To drive a snowmobile you need a full driver's licence and should be over 18.

This activity operates on request at 8:30 am and lasts for around 4 hours and is subject to availability.

Image credit: Lindsay Correa (client)

TRIP EXTENSIONS



Additional night at the ICEHOTEL®

Following your three nights (or longer) at Abisko you will have the chance to add on a night at the remarkable ICEHOTEL® on a bed and breakfast basis.

This is an unforgettable option and one that we highly recommend to our guests.

The details of all of the room options available can be seen below and our Travel Experts will be happy to check availability and provide a quotation for you.

The ICEHOTEL® can now be enjoyed on a year-round basis, thanks to the creation of ICEHOTEL 365. This 2200 metre squared specially designed, permanent ice art hall houses deluxe and art suites, an ice bar, sculpture gallery and an event hall. The environmentally friendly concept serves to make the ICEHOTEL® a year-round destination with a permanent building holding the same standard and visual design as the ice and snow building, which will be available alongside it during winter.

The classic ICEHOTEL® structure is constructed usually by mid-December using around 30,000 tonnes of snow and ice with ice blocks harvested from the nearby Torne River. This winter only structure is home to the ice rooms, winter suites and chapel. Come summer, this section of the hotel simply melts back into the river from which it came.

The hotel consists of several buildings including the classic ice building and ICEHOTEL 365.

GUEST ROOM TYPES

THE COLD ROOMS

Inside the cold rooms, the temperature is on average around -5°C , but with the arctic grade sleeping bag, insulating reindeer skins and your thermal layers, you will stay surprisingly warm!

Please note that the cold rooms are housed across two buildings. Firstly, ICEHOTEL 365, which is a permanent building made of metal, glass and concrete with an ice and snow interior kept cool via cooling tubes. Secondly, there is the classic ice building, which is made of ice and snow and constructed afresh each winter.

There is a range of cold rooms to choose from:

ICE ROOMS (in classic ice building)

These are the simplest rooms which we usually book as standard. These rooms are made of snow and ice and have an ice bed with a mattress topped with reindeer skins, as well as some ice carvings and furniture. The ice rooms are closed off from the corridors by thick curtains rather than doors, but the walls of snow and ice ensure excellent sound insulation. There are around 15 ice rooms available for guests.

ART SUITES (in classic ice building)

Uniquely and expertly designed, the stunning art suites are envisioned and carved by chosen artists and architects from around the world each season. Each room varies in style and is based around a certain theme, utilising sculptures, light and carvings to set the scene. As with the ice rooms, these are closed off from the corridors using thick curtains. There are around 15 winter suites available for guests

DELUXE SUITES (in permanent ICEHOTEL 365 building)

These are the largest cold rooms available and offer incredible ice and art design along with the comfort of your own warm ensuite shower room, toilet and private sauna (as well as space to store your luggage). Each room has a bed with wooden base and extra thick mattress topped with reindeer hides and thermal sleeping bags. There are 10 deluxe suites available.

ART SUITES (in permanent ICEHOTEL 365 building)

These are the same as the winter suites in the classic ice building but being part of the permanent building allows them to have a proper door. Each is independently designed by chosen artists and architects. There are 12 art suites in total.

THE WARM ROOMS

For those less keen on sleeping in low temperatures, the ICEHOTEL® also has a number of warm accommodation options.

KAAMOS HOTEL ROOM (standard)

Light and airy, these en-suite rooms have modern décor and furnishings. Each has a double bed or twin beds and TV.

KAAMOS HOTEL ROOM (superior)

These rooms have the same amenities as the standard Kaamos rooms, however, they have recently been updated and decorated in a contemporary style.

NORDIC HOTEL CHALET

These are designed to accommodate up to four people. Each has one double/twin bedroom and one room with bunk beds, making them ideal for families or small groups of friends. Each has an ensuite bathroom with shower, small living room with fridge and kettle and TV.

ARCTIC CHALET

These have a double and a single room so are best suited to three people. Each chalet is en-suite and has a shower room, small living area, fridge, kettle, TV and telephone.

Please note: Prices are based on you spending the first or last night of your holiday in this unique

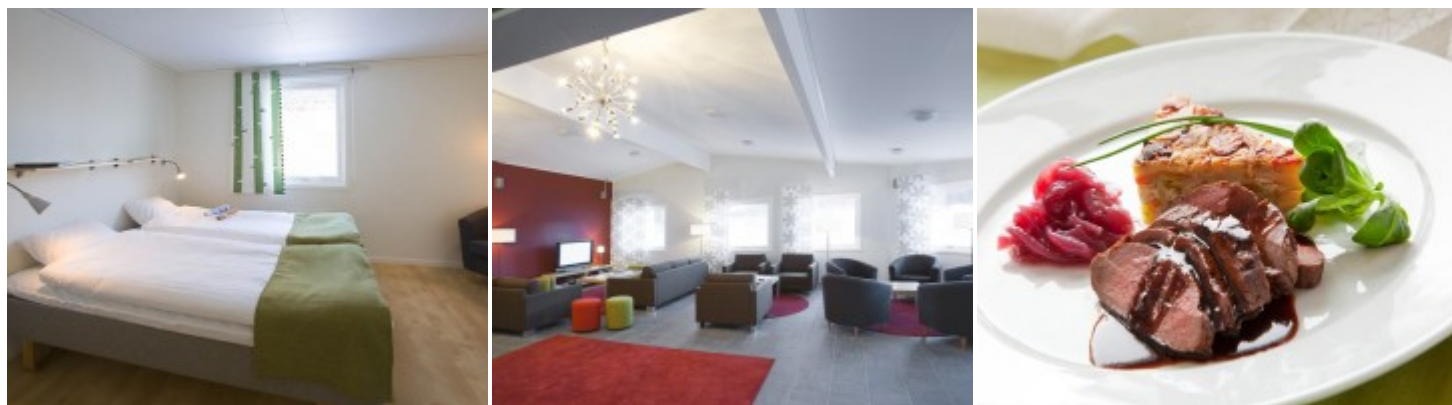
accommodation and not keeping your original accommodation. If you would like to do this on any other night during your holiday you will need to keep your accommodation and supplements will apply.

Image credits: Magnus Skoglöf & Peter Grant imagebank.sweden.se

Included Accommodation

Other options are available - see below for details.

Abisko Mountain Lodge (Nights: 1-3)



Residing 100km from Kiruna, the small and friendly Abisko Mountain Lodge can be found in the wilderness of Swedish Lapland, offering mountain views and a warm welcome. Your hosts, Dick and Mina Johansson are so passionate about the environment in which they live and have made a huge success of this very special lodge.

The lodge is around 4km from Abisko National Park, famed for its hiking trails in the summer and ski trails in the winter. The beautiful natural scenery of Northern Sweden is just a short walk away.

Hotel facilities

- The lodge consists of one main building and a handful of smaller outer buildings. In the main building, you will find 20 rooms, the reception lounge, restaurant and the bar area
- The chefs here take great pride in the food, making great use of local and seasonal produce and traditional Swedish recipes. Breakfast is served buffet style, whilst lunch and dinner are set menus (lunch can also be provided to take with you on your daytime excursions)
- The lounge area in the lodge offers comfortable seating and a TV; perfect for socialising and relaxing in the evening. The bar area is located nearby, serving a range of beers, wines and spirits
- In one of the outer buildings, guests can make use of the sauna which is heated daily. Free Wi-Fi is available throughout and there is also a drying room for guests to store outdoor clothing

Guest room types

Twin and double rooms: There are 20 rooms in total at Abisko which are simple and modern, mainly providing twin beds, en-suite shower room and clothes hooks. There are only a handful of double rooms at the lodge with the remaining rooms offering twin beds only (it is not possible for these beds to be made up as double due to the shape of the room). There are no televisions in the rooms as all guests are encouraged to gather in the communal areas in the evenings. The package price is based on a twin room; if you would like to upgrade to a double room, a supplement will apply.

Superior rooms: The lodge also has a small collection of superior rooms, which are located opposite the main lodge building, only a short walk away. The superior rooms are larger and slightly more modern in style, enjoying all of the same amenities as the standard double or twin rooms, as well as tea and coffee making facilities. Superior room upgrade prices are available on request.

Winter Cottages: The Mountain Lodge also has four cottages which guests can book. These are a short walk from the main building and are simply furnished. Each has a mezzanine sleeping level which sleeps up to four people in single beds and there is also a double sofa bed downstairs along with a kitchenette and sitting area. The cottages have a toilet and a sink, but no shower facilities. Guests staying in the cottages have access to the showers in the nearby sauna building. These are open to all guests and not private to those staying in the cottages.

Other accommodation options

Contact us for a personalised quote.

The ICEHOTEL®



THE ORIGINAL

The [ICEHOTEL®](#) at Jukkasjärvi has the impressive claim of being the world's first ice hotel and was developed from a concept beginning in 1989. A local entrepreneur by the name of Yngve Bergqvist who ran a thriving tourism business in the summer decided to attract tourists in the winter by offering ice carving workshops and creating a small ice igloo as a gallery to showcase these designs.

This igloo grew in scale each year until one night a group of guests, equipped with reindeer skins and sleeping bags asked to spend the night, creating the concept of the ice hotel in the process!

Although [ice and snow hotels](#) can be found across Lapland, the ICEHOTEL® remains the original.

What's more, 2018 saw the ICEHOTEL® become the first-ever Nordic Swan Ecolabel hotel made completely of ice and snow.

The certification process looks at all areas, from energy and water consumption to waste management; understandably, this presented many challenges when measuring a hotel whose rooms melt away at the end of each winter season!

The eco-label adds to a growing list of certifications for the ICEHOTEL® who is also certified a Sustainable Arctic Destination. Certification ensures guests are choosing environmentally conscious products and the ICEHOTEL® are – rightly so - very proud to receive such recognition.

ICEHOTEL 365

The hotel now boasts ICEHOTEL 365, a permanent structure, allowing it to be a year-round destination to visitors who travel the world to sleep in a room of ice and snow. Containing deluxe rooms, art suites, an ice bar and a sculpture hall, this environmentally sustainable building is a construct of glass, metal and concrete, but with the same incredible standard and visual design of snow and ice on the inside, with cooling tubes to keep it at a temperature of around -5 at all times.

Alongside this is the classic ICEHOTEL® building, constructed purely of ice and snow and carefully crafted each December, utilising blocks from the nearby Torne River.

Home to ice rooms, winter suites and a chapel the structure is a marvel to see and, come summer, simply melts back into the river from which it came. Each year, architects, designers and artists submit designs for the hotel's features and a handful are chosen to go forward with their theme.

The hotel consists of several buildings including the main ice building and ICEHOTEL 365. We cannot guarantee which area our guests will stay in.

The rooms which are contained within the ice and snow building will not be available until after the 14th of December. Check-in time for the cold rooms is usually around 6 pm and for the warm rooms, it is approximately 3 pm. The ICEHOTEL® is open to members of the public for viewing between 10 am and 6 pm. You will check out after breakfast.

Hotel facilities

- The reception is in the main warm building which also houses the lounge area, warm bar, dressing room, luggage room, restaurant and gift shop which sells a selection of ICEHOTEL® themed gifts and locally sourced handicrafts
- Guests who are on a guided tour of the ICEHOTEL® will also visit the large warehouse where you can learn about how the hotel is constructed each season
- The restaurant serves breakfast lunch and dinner which include some wonderful Swedish favourites. The restaurant operates fixed dinner seating times and we highly recommend that you make a reservation in advance with us
- As an alternative, guests can eat at the Homestead Restaurant which is a smaller, rustic restaurant a short walk from the hotel
- The classic ICEHOTEL® building is connected to a warm building which houses the toilets, showers and sauna. There are also lockers in here in which to store your valuables and clothes overnight
- The warm building also has a small number of bunk beds in case you decide your ice room is not for you

Guest room types

The Cold Rooms: the inside of the cold rooms is kept at around -5°C but you will be equipped with arctic grade thermal sleeping bags so you will stay surprisingly warm!

Please take note that the cold rooms are accommodated in two separate buildings. ICEHOTEL 365 is a permanent building constructed of metal, glass and concrete with an ice and snow interior kept cool via cooling tubes. Some rooms are also in the classic ice building which is made wholly of ice and snow and constructed afresh each winter season. We cannot guarantee which area you will stay in.

Ice Rooms (in classic ice building) (only available after 14 December): the ice rooms are the simplest designed rooms which are usually booked as standard. These are made of ice and snow and each contains a mattress topped with reindeer skins and also some ice furniture and carvings. They are closed off from the corridors via thick curtains as opposed to doors, but the thick walls of ice and snow allow for great sound insulation. There are usually around 15 rooms available for guests.

Art Suites (in classic ice building) (only available after 14 December): these are uniquely and beautifully designed by chosen artists around the world each year and offer a wide variety of themes and include intricate sculptures and carvings to reflect this. As with the ice rooms, these have curtains instead of doors and there are around 15 in total for guests to book.

Deluxe Suites (in permanent ICEHOTEL 365 building): the unique and enchanting Deluxe Suites 365 are individually themed and hand-carved by artists commissioned throughout the world, with the designs changing each year. To spend a night amidst the lifelike and exquisite carvings is a surreal and magical experience. You are awoken by sparkling colours which reflect from the ice and cup of hot lingonberry juice at your bedside table. A sauna session then awaits you before you enjoy a delicious breakfast. The Deluxe Suites are part of the new concept ICEHOTEL 365, available all year round thanks to a new specially designed building which is run on solar power. There are three different types of Deluxe suite available.

Deluxe Suite Hilla: the Hilla Suites are beautifully decorated suites available throughout the year. They contain a bathroom, two comfortable armchairs, a shower and a sauna, which is directly connected to the bedroom. A comfortable bed decorated with reindeer hides and inclusive of a thermal sleeping bag lies at the centre. The design is a mixture of local culture and history created by Marjolein Vonk and Pia Sandgren. A heated relaxation area is available which provides storage for your belongings and the suite has doors which lock for your privacy.

Deluxe Suite Jáuvre: these majestic suites are furnished with comfortable Carpe Diem beds covered in reindeer hides and inclusive of a thermal sleeping bag. Inside the room, there is a bathroom, two comfortable armchairs, a shower, sauna and a bathtub. Similarly, to the other suites, the Jáuvre suites are designed with a combination of local culture and history by Marjolein Vonk and Pia Sandgren and they have a heated relaxation area from where you can store all your belongings and the suite has doors which lock for your privacy.

Deluxe Suite Johka: this spacious suite contains a comfortable double bed, a connecting bathroom, two comfortable armchairs and double waterfall showers, which are directly connected to the room. The design features a combination of local culture and history and was created by Marjolein Vonk and Pia Sandgren. A heated relaxation area provides storage for your belongings and the suite has doors which lock for your privacy.

Art Suites 365 (in permanent ICEHOTEL 365 building): these offer the same amenities as the art suites in the classic ice building but being part of the permanent building allows them to have a proper door. Each is independently and artistically designed by chosen artists and architects to reflect new carefully chosen themes each year. There are 12 art 365 suites in total.

The Warm Rooms: for those less keen on sleeping in low temperatures, the ICEHOTEL® also has a number of warm accommodation options:

Kaamos Hotel Room (standard): light and airy, these en-suite rooms have modern décor and furnishings. Each has a double bed or twin beds and TV.

Kaamos Hotel Room (superior): these rooms have the same amenities as the standard Kaamos rooms, however, they have recently been updated and decorated in a contemporary style.

Nordic Hotel Chalet: these are designed to accommodate up to four people. Each has one double/twin bedroom and one room with bunk beds, making them ideal for families or small groups of friends. Each has an ensuite bathroom with shower, small living room with a fridge and kettle and TV.

Arctic Chalet: these have a double and a single room so are best suited to three people. Each chalet is en-suite and has a shower room, a small living area, fridge, kettle, TV and telephone.

Image credits: ICEHOTEL, Jose Carlos, Cabello Millan, Javier Alvaro, Colomino Matassa & Asaf Kliger, Tjasa Gusfors, David Andren, AnnaSofia Maag, Anna Katrin Kraus, Hans Aesch, Rob Harding, Timsam Harding, Luc Voisin, Mathieu Brison, Petros Dermatas, Ellie Souti, Nicolas Triboulot, Cedric Alizard, Sebastian Scheller, Kristina Mockel, Jose Carlos, Cabello Millan, Javier Alvaro, Colomino Matassa, Peter Grant & Magnus Skoglöf & Martin Jakobsson & Imagebank.sweden.se

The Specifics

Holiday group size (approximate)

Minimum of 2 people - during activities the maximum group size is approximately 20 people

Group Size

We always try to provide an approximation of the group size you can expect to be with for the duration of each of our holidays. It may be that you are joined by others for parts of your holiday (such as transfers and particular activities) but the above number reflects those you can normally expect to be with from beginning to end. If group size is something which is particularly important to you, please speak to our Travel Experts and they can suggest the best holidays for you.

Tailor-made holiday group sizes will vary for all activities as will the group size for any additional activities you book.

Minimum numbers required for a holiday to operate

Some of our holidays require a minimum number of participants to operate (as listed in the 'Group Size' section). If your holiday departure has not yet reached the minimum number, you will be told at the time of booking. In the unlikely event that your chosen date is not guaranteed by nine weeks before your scheduled departure date, we will contact you to discuss the available options as per our [booking conditions](#).

Minimum and maximum age

If a specific minimum age applies to this holiday, it can be found in the Key Facts box on the holiday Overview page.

Unless otherwise stated in the Key Facts box on the holiday Overview page, the minimum age for participation in an Aurora Zone holiday is typically 12 years old (there may be younger children in some destinations who have booked with other companies). If an adult-only environment is important to you, then please contact our Travel Experts and they will advise on the best dates and destinations for you. If you are looking for a holiday designed specifically for families then please see our sister company www.activitiesabroad.com.

Itinerary amendments

The order of activities listed in this agenda is provided for guidance only, your final and detailed itinerary will be provided either with your final travel documents (which are uploaded into your online account around a week prior to departure) or upon arrival.

Terms and Conditions

Our full booking terms and conditions can be found on our website: <https://www.theaurorazone.com/booking-conditions>